

Market (and Stock) Movements

Robert Brain

November 2024

(Brainy's ***Share Market Toolbox***)



Introduction

How do you find strong sectors, or strongly performing stocks?

Many users of charting software (such as BullCharts) use it to produce price charts for specific stocks, so as to review the share price performance, or to apply chart indicators and draw a conclusion about price strength or trend.

Or the users run market scans to identify stocks with a share price performance that meets certain criteria, or looking for bullish observations based on indicators.

And they might do this on a subset of the securities in the market and not all securities in the market – that's their *stock universe*.



Some options

BullCharts includes some tools that many users are not aware of, and which could be used to help identify strongly moving **securities**, or performing **sectors**.

Are you looking for:

- 1) Specific stocks that have outperformed the market “today”?
- 2) Strong sector(s)?



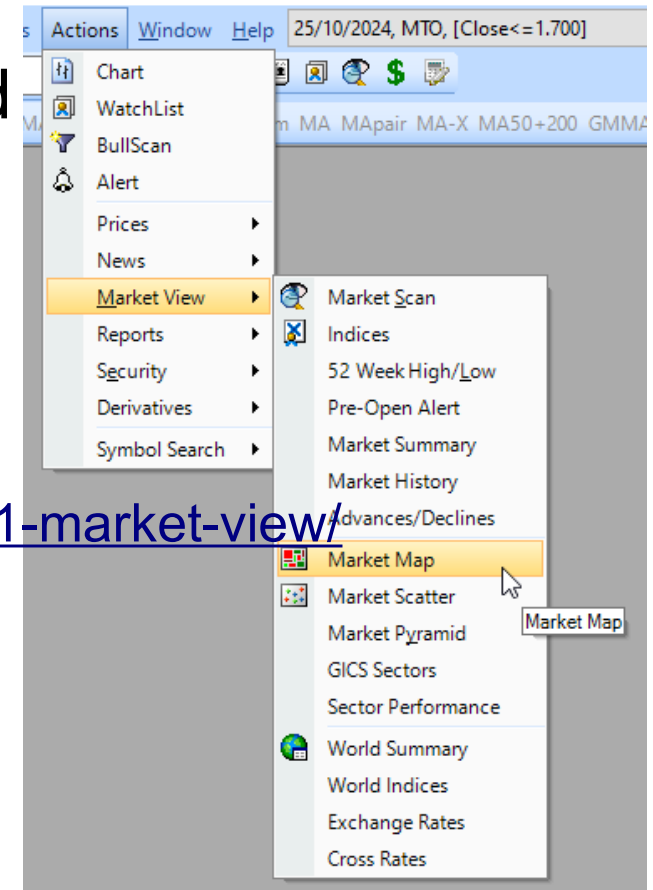
BullCharts tools

Some of the BullCharts tools, using menu options:

- Actions > Market View > Market Map
- Actions > Market View > Market Scatter
- Actions > Market View > Market Pyramid
- and Sector analysis...

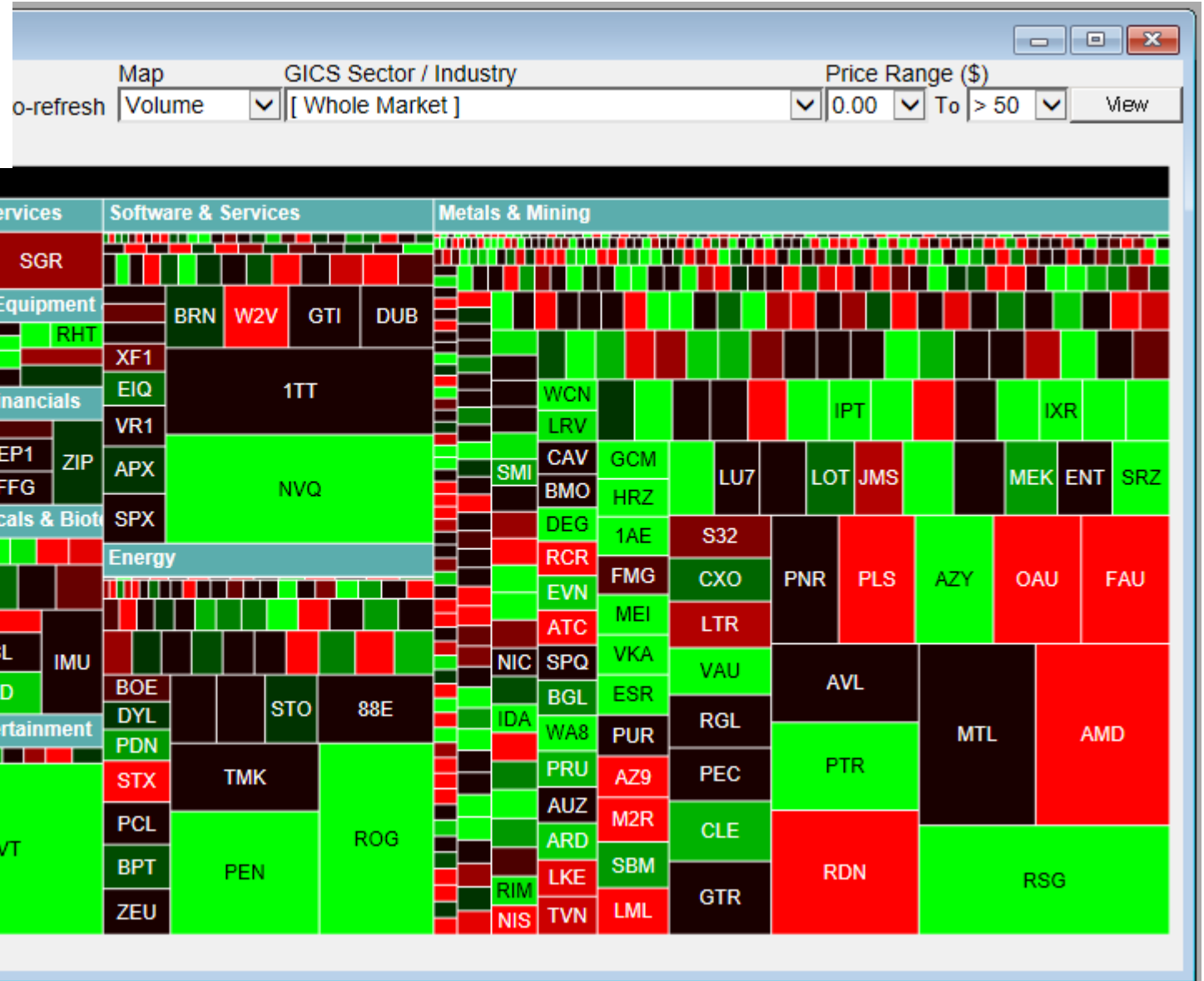
See more online:

<https://kb.bullcharts.com.au/knowledge-base/chapter-21-market-view/>



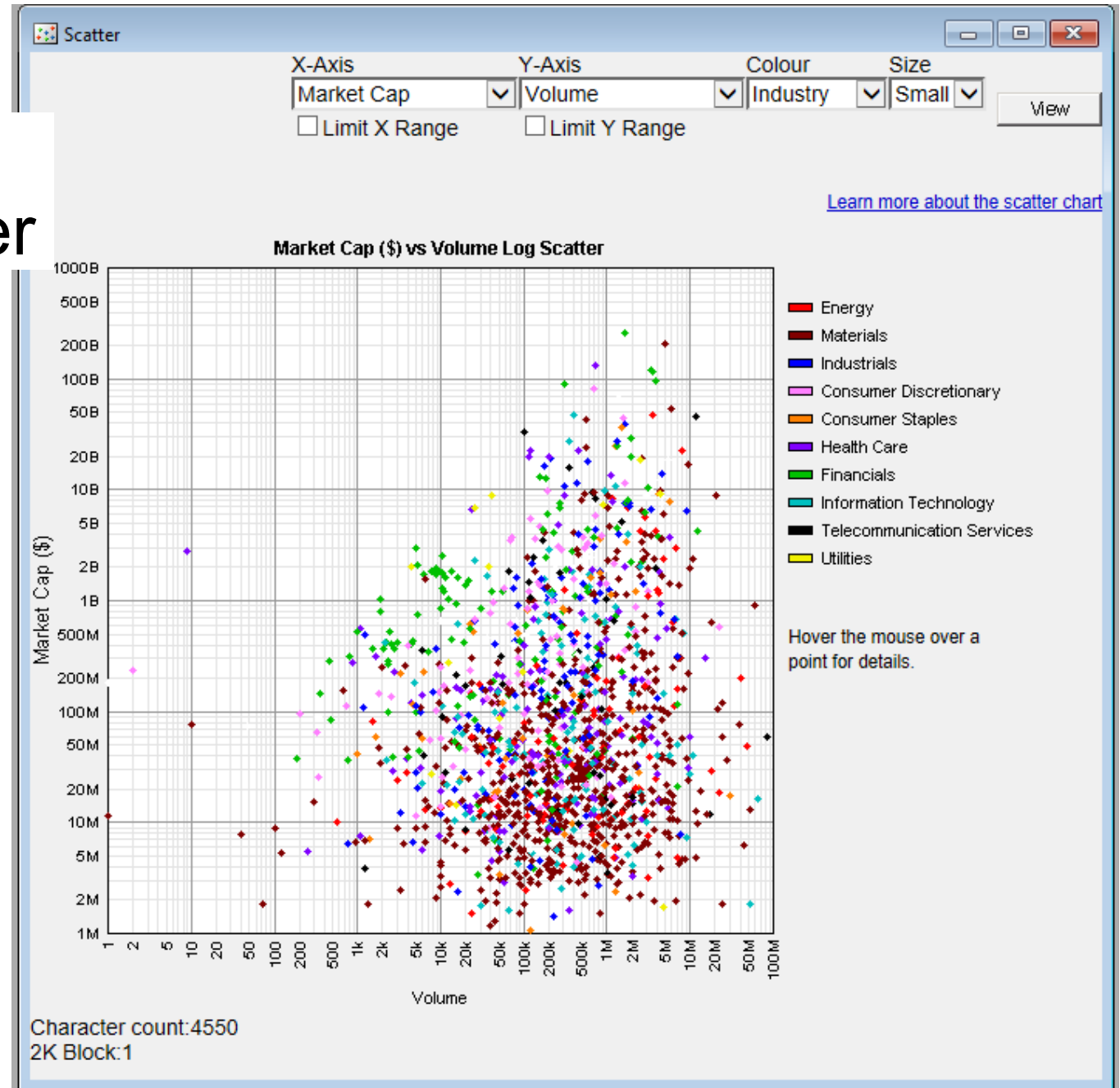
BullCharts tools

BullCharts Market Map



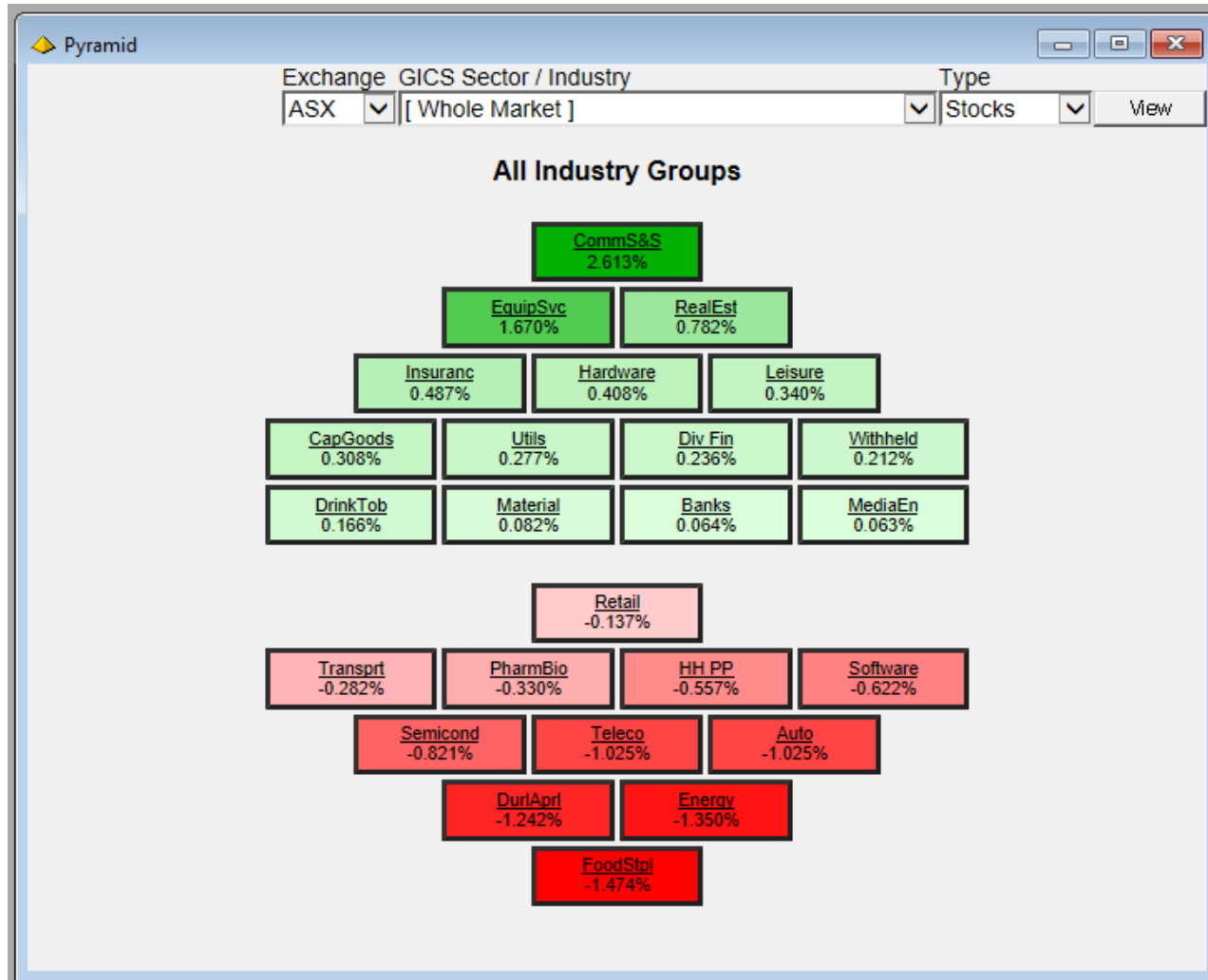
BullCharts tools

BullCharts Market Scatter



BullCharts tools

BullCharts Market Pyramid



BullCharts tools

BullCharts GICS Sectors

GICS Sectors										
GICS Sector / Industry				Sort By		Show		Period		
Energy				%		Top		Latest		
Symbol	Company	Last	Movement	High	Low	Volume	Cum. \$Sales	Trades		
ROG	RED SKY. FPO	0.009	↑ 0.001 ↑ 12.50%	0.010	0.008	48,588,099	453,476	137		
EEG	EMPIRE ENE FPO	0.200	↑ 0.015 ↑ 8.11%	0.200	0.185	772,267	149,531	72		
MEU	MARMOTA FPO	0.043	↑ 0.003 ↑ 7.50%	0.043	0.041	914,119	39,042	18		
SRJ	SRJTECHNO CDI 1:1	0.045	↑ 0.003 ↑ 7.14%	0.045	0.045	89,558	4,030	1		
PEN	PENINSULA FPO	0.062	↑ 0.004 ↑ 6.90%	0.064	0.059	40,774,534	2,497,401	1,334		
FDR	FINDER FPO	0.049	↑ 0.003 ↑ 6.52%	0.049	0.047	48,000	2,292	5		
RLT	RENERGEN CDI 1:1	0.790	↑ 0.045 ↑ 6.04%	0.795	0.755	3,075	2,398	7		
AEL	AMPLITUDE FPO	0.180	↑ 0.010 ↑ 5.88%	0.180	0.170	2,188,521	386,127	449		
GHY	GOLDHYDROG FPO	0.700	↑ 0.025 ↑ 3.70%	0.710	0.670	146,901	102,491	44		
VEA	VIVA E GRP FPO	2.660	↑ 0.090 ↑ 3.50%	2.670	2.560	3,867,157	10,193,820	3,503		
TM1	TERRAMETAL FPO	0.031	↑ 0.001 ↑ 3.33%	0.032	0.031	1,475,471	46,145	12		
BRK	BROOKSIDE FPO	0.495	↑ 0.015 ↑ 3.13%	0.500	0.480	43,204	21,142	121		
COI	COMETRIDGE FPO	0.170	↑ 0.005 ↑ 3.03%	0.170	0.165	971,550	163,970	55		
NHC	NEW HOPE FPO	4.950	↑ 0.140 ↑ 2.91%	4.975	4.860	2,461,372	12,159,413	4,627		
PDN	PALADIN FPO	7.910	↑ 0.220 ↑ 2.86%	7.965	7.350	4,691,617	35,934,167	12,250		
ALD	AMPOL FPO	29.250	↑ 0.770 ↑ 2.70%	29.380	28.530	1,785,614	52,022,097	20,993		
GAS	STATE GAS FPO	0.039	↑ 0.001 ↑ 2.63%	0.043	0.034	1,790,392	71,291	35		
NXG	NEXGEN CDI 1:1	12.175	↑ 0.285 ↑ 2.40%	12.320	12.090	305,981	3,725,037	1,746		
WDS	WOODSIDE FPO	24.640	↑ 0.540 ↑ 2.24%	24.760	24.360	3,577,421	88,088,974	24,406		



BullCharts tools

BullCharts Sector Performance

The screenshot shows a window titled "Sector Performance" with a toolbar at the top containing "Auto-refresh", "Sort", "Group By", "Period", and "View" buttons. The "Sort" dropdown is set to "Volume", "Group By" to "Sector", and "Period" to "Latest". Below the toolbar is a table with the following data:

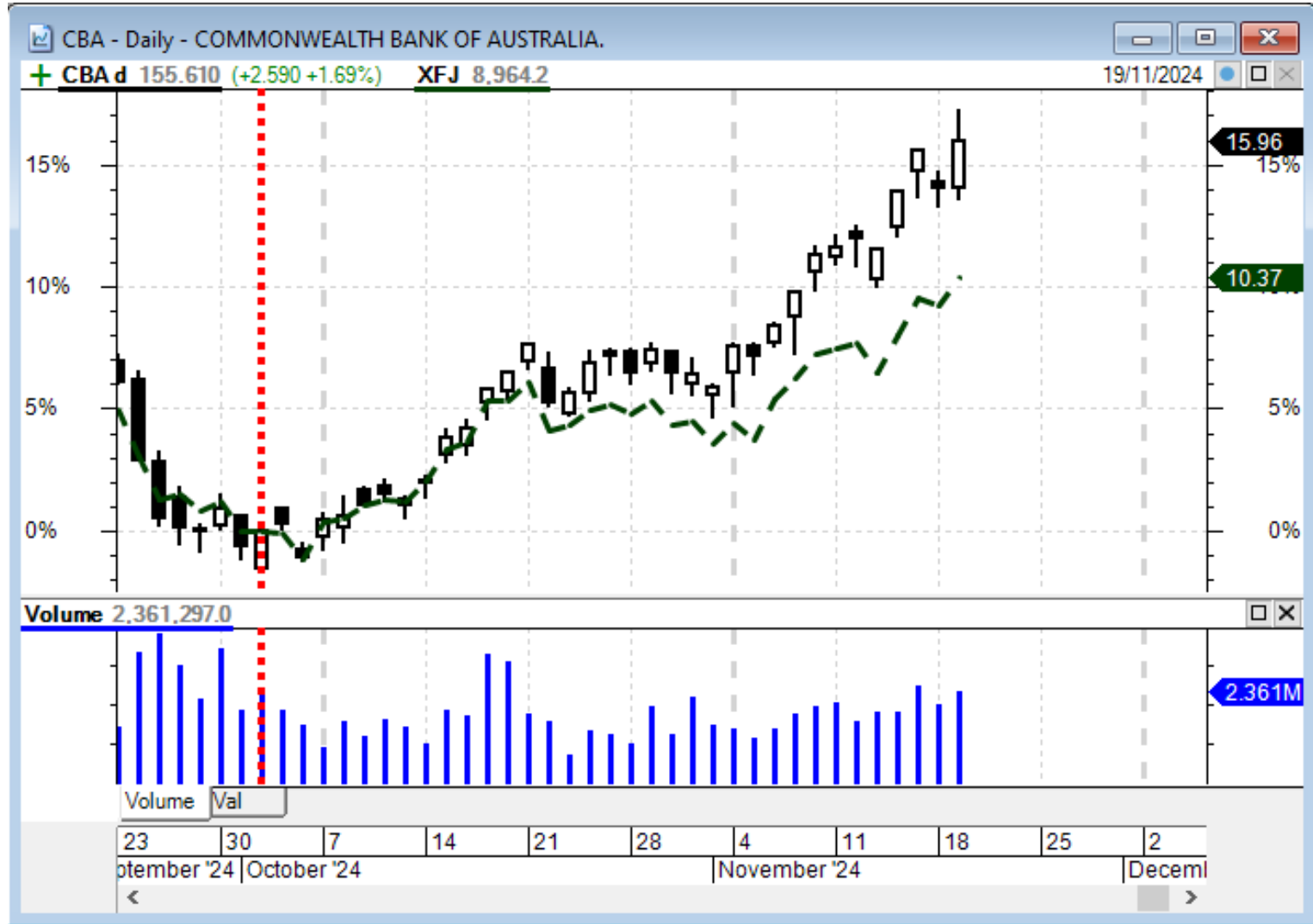
Sector	Weight *	* Volume	Sales	Trades	Market Cap	Count
Materials	50%	1,176,285,159	\$1,037,836,186	420,193	\$588,435,075,210	21,248
Energy	12%	280,944,007	\$334,793,447	112,806	\$119,302,878,137	6,371
Information Technology	11%	251,147,318	\$299,049,341	168,456	\$131,987,895,801	2,369
Health Care	6%	148,745,900	\$454,705,543	194,139	\$319,760,876,070	5,435
Telecommunication Services	6%	139,974,304	\$135,283,689	70,771	\$140,058,388,048	3,856
Industrials	4%	94,781,659	\$322,813,744	180,325	\$276,318,706,795	7,516
Financials	4%	90,716,023	\$1,106,130,361	298,763	\$991,325,141,521	16,982
Consumer Staples	3%	62,363,877	\$187,712,067	70,560	\$99,918,572,582	4,859
Consumer Discretionary	2%	59,039,860	\$337,503,172	207,894	\$232,770,399,885	10,098
Real Estate	2%	53,592,515	\$231,128,702	115,646	\$202,834,897,587	5,246
Utilities	1%	13,456,981	\$69,854,215	30,888	\$57,001,078,034	1,835



BullCharts tools

Comparative percent performance

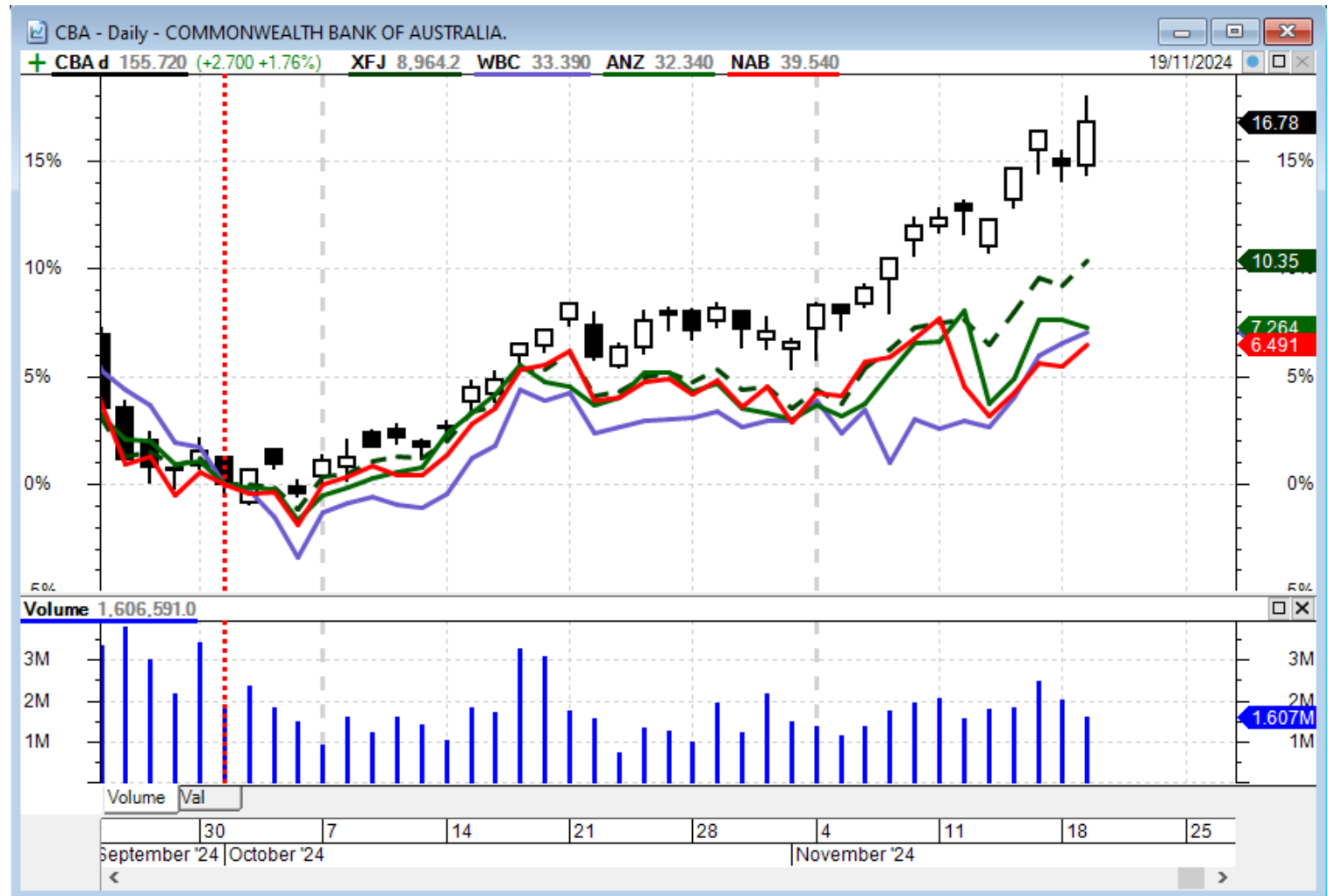
CBA v
XFJ



BullCharts tools

Comparative percent performance

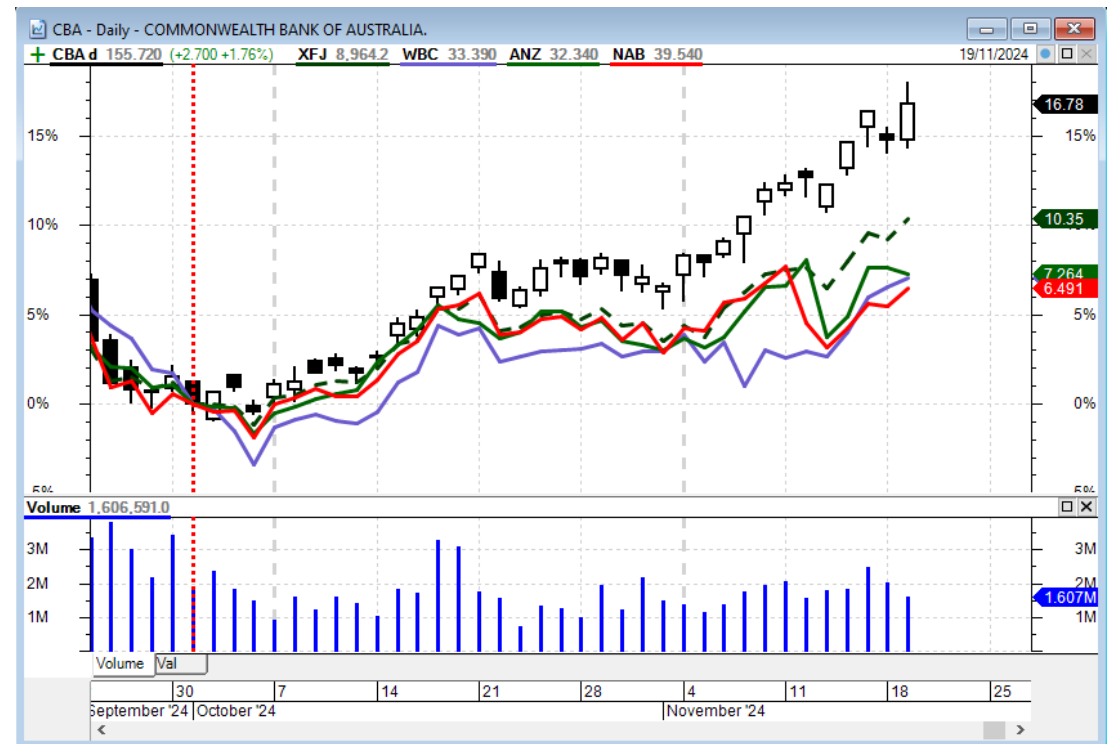
CBA v other banks



BullCharts tools

Comparative percent performance:

- Use BullCharts toolbar button:



BullCharts Tools

Detailed Watchlist

- Can be created for any watchlist
- Columns can be customised
- For live data plan, the price data will auto-update during the session.

Code	News	Last	%Mv	BuyPrice	QuanAsk	SellPrice	QuanBid	High	Low	Volume	Status	TradedTime
ALL	▲	67.610	0.059	67.610	4,175	67.630	946	68.630	66.840	1,426,943	ADJUST...	16:45:12
ANZ	▲	32.250	0.218	32.240	200	32.290	10,549	32.500	32.190	5,255,326	ADJUST...	17:01:23
BHP	▼	39.810	-0.674	39.800	7,089	39.840	13,925	40.080	39.610	9,527,196	ADJUST...	16:45:15
CBA	▼	156.2...	-0.090	156.230	149	156.240	10,000	157.050	154.8...	1,859,501	ADJUST...	16:45:18



CONCLUSION?

- Was this useful?.



Thank you

Questions?



Brainy's *Share Market Toolbox*

- More information on this topic and others;
- Technical Analysis information;
- Subscribing Toolbox Members have access to lots more information;
- A special version of this slide set including “Speaker Notes” will soon be available to Toolbox Members.

See details here:

www.robertbrain.com

