



Brainy's Articles on BullCharts Control Panel and Securities Manager

Article No:
BC-04-000
page 1 of 4
30 Dec 2009

This article
is FREE *

Introduction

One of the key features of the BullCharts software is the Control Panel and Securities Manager.

The Control Panel looks something like the screen shot in Figure 1 below. The Control Panel itself comprises six key features which are accessible using the six tabs across the bottom of the Control Panel window pane:

- **Securities Manager** — (Normally the first tab from the left across the bottom of the Control Panel window pane.) It is a hierarchical view of the stocks and indexes in the Australian market, plus an easily customisable view of your own watchlists (as in the Figure below).
- **Scan Manager** — (Normally the second tab.) The tool to create, modify and run scans (filters) across one or more watchlists to find stocks with share prices that match certain criteria. Already includes more than 140 supplied scans for you to start with.
- **Quick Search Tool** — (Normally the third tab.) To search for the Stock Code for a company, with a known group of letters somewhere within the company name.
- **Layer Manager** — (Normally the fourth tab.) A tool that allows you to temporarily “hide” some elements of a price chart (eg. line studies, annotations and indicators).
- **Workspace Manager** — (Normally the fifth tab.) A tool to help you with saving, managing and applying a BullCharts “workspace” (ie. a stored screen “layout” of multiple price charts, potentially across multiple display monitors).
- **Alert Manager** — (Normally the sixth tab.) A tool to use to apply a price alert to a stock, and to modify the alert features, and to manage all price alerts.

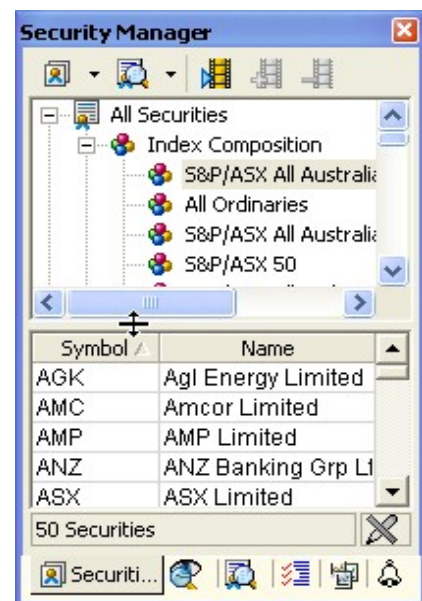


Figure 1: The Control Panel and Securities Manager.

The earlier versions of BullCharts did not include all of these features. Some were added with BullCharts version 3.8 in late 2008. Earlier versions also did not refer to the Control Panel as such. What was called the Securities Manager in earlier versions has been expanded to include these extra features and is now referred to as the Control Panel.

This article in Brainy's series on BullCharts (number BC-04-000) provides an overview of the Control Panel, and these six key features.

Control Panel — how to find it?

There are a number of ways to display the Control Panel. One of these is to use Function key <F8>. All of the display options are listed below.

- Menu option: *View > Panels > Control Panel (F8)*
- Function key F8 — to display the Control Panel, and the last-used Control Panel function. That is, if the Layer Manager was the last used function, and you hide the Control Panel, then display it using F8, then the Layer Manager will be displayed.
- Function key F6 — to display the Control Panel and in particular the Security Manager.
- To go straight to any of the other Control Panel features, use the menu option: *View > Panels*, and then choose any of the other options such as: Scan Manager, Workspace Manager, Alert Manager, Layer Manager, Quick Search.



Brainy's Articles on BullCharts

Control Panel and Securities Manager

Article No:
BC-04-000
page 2 of 4
30 Dec 2009

This article
is FREE *

Appearance — location and size

The Control Panel window pane can be dragged to various sizes, and it can be dragged to other locations around the window.

By default, when the Control Panel is displayed it is “docked” against the right-hand side of the window, and it displays at a specific width. If you would prefer to have it on the left-hand side of the window, simply click the mouse cursor on the very top “title bar” of the Control Panel (where it has the text “Security Manager” or the equivalent), and drag it to the left, away from the right-hand edge.

If you let go of the mouse cursor while the Control Panel is some where in the middle of the window, it will “float” there. To dock the Control Panel against the left-hand window edge, simply keep dragging it across to the left-hand side until it “docks” (it will change from the floating-style to a docked style). To get it to dock, you do need to drag it more than half way past the edge of the window.

To simply make it wider, just use the mouse to click and drag the left-hand edge of the Control Pane window pane (or the right-hand edge if it is docked to the left). When the mouse cursor is in the correct location, the cursor will change appearance.

The Security Manager is divided into two portions — the upper portion is the hierarchical view of the Securities and the Watchlists, while the lower portion is the contents of any security group, index or watchlist. The divider between the upper and lower portions can be dragged into a new location to make either portion larger/smaller as follows.

Place the mouse cursor over the divider between the two portions, and the mouse cursor will change (see Figure 2 at right). Click and hold the mouse cursor, and drag the divider up or down to the desired location.

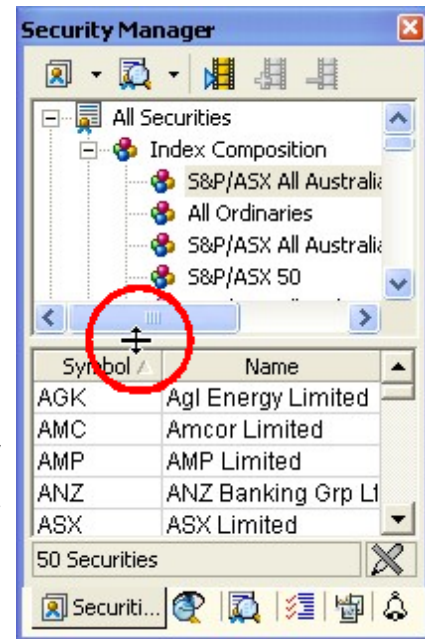


Figure 2: Control Panel - adjusting size.

Customise the appearance — and remember it

You can customise the appearance of the Control Panel in a number of ways.

Note that BullCharts does have a setting to remember the revised appearance of toolbars and their layout; and it also applies to the Control Panel in some circumstances.

Use this menu option: *Tools > Preferences > General (tab)*, and note the check-box option “Remember menu/toolbar layout and customizations”.

If you change the size of the Control Panel (eg. drag it wider), then to save this revised appearance you do need to have this menu option enabled.

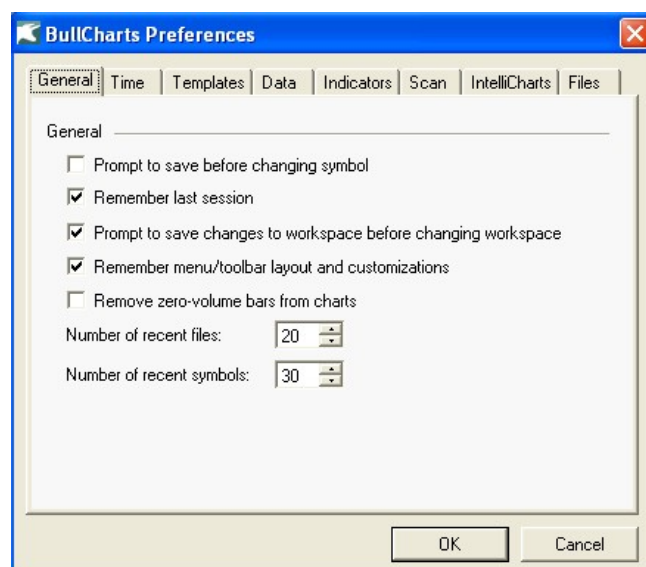


Figure 3: Menu option:
Tools > Preferences > General (tab).



Brainy's Articles on BullCharts

Control Panel and Securities Manager

Article No:
BC-04-000
page 3 of 4
30 Dec 2009

This article
is FREE *

Control panel tabs

When you open the Control Panel, and drag the left edge to the left to make the whole Control Panel wider, the six tabs across the bottom look something like in Figure 4 at right.

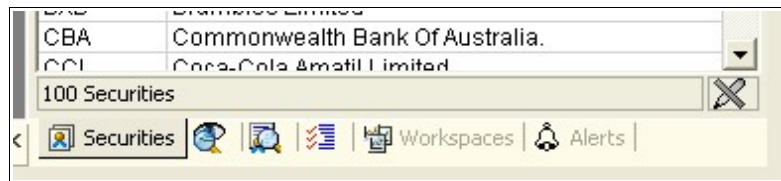


Figure 4: Control Panel - Six tabs across the bottom.

Resequence the tabs

This is an option that many people will not find much use for. But if you find you use a couple of the Control Panel features more often than the rest, or conversely, if there is a feature or two that you rarely use, then you can easily change the sequence of the tabs across the screen. That is, for example, if you rarely use the Workspace Manager, then you can drag it to the right-hand end of the list of tabs, and have the more commonly used ones to the left-hand end.

To do this, simply use the mouse cursor to grab and drag one of the tabs to the left or right.

Auto-hide the Control Panel

The Control Panel has an “auto-hide” feature. When it is docked, it looks something like the left-hand screen shot in Figure 5 at right. In the top right-hand corner is a picture of a drawing-pin (or push-pin), and a small cross.

The small cross can be used to close the Control Panel.

The push-pin can be used to enable the Auto-hide feature. If you mouse-click on the push-pin, the Control Panel will collapse and “hide” and look like the right-hand screen shot in Figure 5 at right.

With the Control Panel auto-hidden, if you move the mouse cursor over one of the “tabs”, that particular option will pop out.

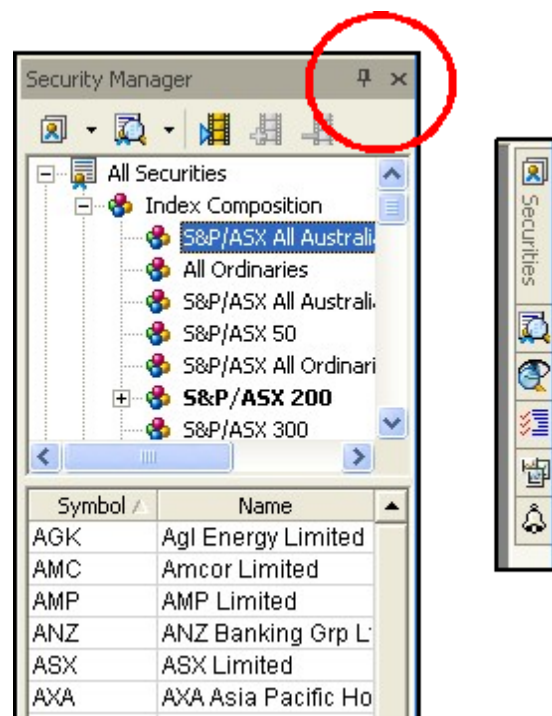


Figure 5: Control Panel — (a) when docked, and (b) when set to Auto-Hide.



Brainy's Articles on BullCharts Control Panel and Securities Manager

Article No:
BC-04-000
page 4 of 4
30 Dec 2009

This article
is FREE *

Closing the Control Panel

The Control Panel can be closed using any of the following options:

- The small cross in the top right corner.
- A Function key — F6 or F8. Depending on which “Manager” is displayed, you might need to use the F6 key twice — once to return to the Security Manager, and then once to close it.

Control Panel — key features

The six key features that comprise the Control Panel will be described in other Articles in Brainy's series on BullCharts.

Summary

The BullCharts Control Panel is a key feature of the software. This article in Brainy's series on BullCharts (number BC-04-000) describes the Control Panel and its key features, how to access the Control Panel, and how to change its appearance.



For more information on Share Trading, or
Technical Analysis, or BullCharts software,
look for more of Brainy's articles, or the other resources, in
Brainy's Share Market Toolbox: www.robertbrain.com

Your own notes and comments:

.....

.....