



Brainy's Articles on Technical Analysis Candlestick patterns

Article No:
TA-3750
(was TA-3700)
page 1 of 7
July 2010
Rev: Aug 2011
This article
is NOT free*

* — Brainy's eBook (PDF) Articles are only available to **Share Market Toolbox** members.
Visit www.robertbrain.com/articles/ for more information.

The first page of every article is free, and some of the articles are completely free (eg. shorter ones and Table of Contents).

Introduction

Share market price charts can be displayed in a number of ways, with the most common chart types being a *line chart*, the *OHLC chart* (open, high, low, close) and the *candlestick chart*. A simple candlestick chart is shown in Figure 1 below.

The candles on candlestick price charts display the open, high, low, and closing prices in a format somewhat similar to the modern-day bar-chart. On the weekly chart, each candle summarises the price action over one week. In the sample weekly chart of Commonwealth Bank at right, the horizontal time axis shows the date at the start of each week. For example, the candle in the week of 13 July 2009 ranged in price from about \$37 up to nearly \$40.

The individual features of each candle can provide clues to the underlying emotion and psychology of the market. These clues are in the length of the upper or lower shadow, as well as in the height of the candle body, and whether the Open is above the Close, or below it. And there are names allocated to specific candle shapes — eg. Doji and Marubozu.

Further to this, two consecutive candles together can provide a greater insight into the state of the market, and perhaps the likely future direction of the market. In this situation, the two candles together can form a specific pattern that has an assigned name. This also applies to some particular combinations of three candles, and sometimes four or five candle groups.

In this Article TA-3750, "*Candlestick patterns*", we take an introductory look at a number of the more common single-candle shapes (or patterns), and the multi-candle patterns, and how to interpret them. Because of the very large number of recognised candle shapes and patterns, this article can only be a good introduction to the topic.

For an introductory look at the basic candle shape, and a description of the candle's component parts (ie. body, shadow, wick, etc.), refer to Brainy's Article TA-3700, "*Candlesticks explained*".



Figure 1: Simple weekly candlestick chart.

Candlestick basics — quick revision

Here is a quick recap of some key concepts, with reference to Figure 2 at right, noting that a candle might, or might not, comprise a body, and possibly an upper shadow, and possibly a lower shadow.

Candle body — The rectangular candle body highlights the trading range from the open to the close and it might be very short (as in a Doji, see below), or rather long. Candles tend to be either white/black on a chart, or green/red. The white (or green) candle indicates the close is higher than the open. The black (or red) candle indicates the close is lower than the open.

Candle tails, wicks, shadows — The top of the upper shadow is the high of the period, while the bottom of the lower shadow is the low of the period. The shadows might be non-existent, or at the other extreme they can be very long.

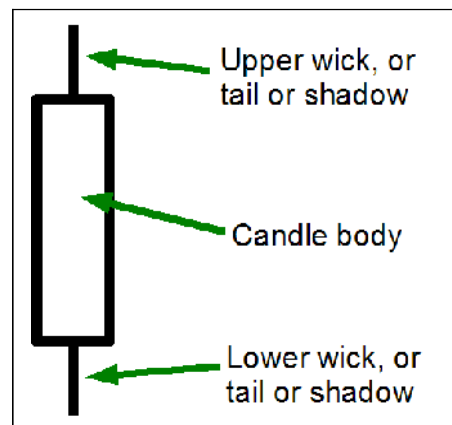


Figure 2: Candlestick elements.



Brainy's eBook (PDF) Articles

This article
is NOT free*

Unfortunately,
the remaining pages of this article
are not available for free.

Some of the eBook Articles are available for free,
including the Table of Contents pages,
and the Introduction and Overview pages.

These articles take a lot of time, experience,
knowledge and expertise to compile.

However, there is some good news.

You can subscribe as a Toolbox MEMBER
and have unlimited access to all Articles,
plus a whole lot more.

Visit: www.robertbrain.com

Robert writes and updates Articles on three topics:

- ✓ Share Trading & Investing
- ✓ Technical Analysis
- ✓ BullCharts (charting software)

See a list of Articles in the free section of the Toolbox:
www.robertbrain.com/members-area/articles.html
(the green shaded articles are free)

* — Brainy's eBook (PDF) Articles are only available to **Share Market Toolbox** members.
Visit www.robertbrain.com/articles/ for more information.
The first page of every article is free, and some of the articles are completely free (eg. shorter ones and Table of Contents).