

TradeSim

for back-testing in BullCharts

Introduction

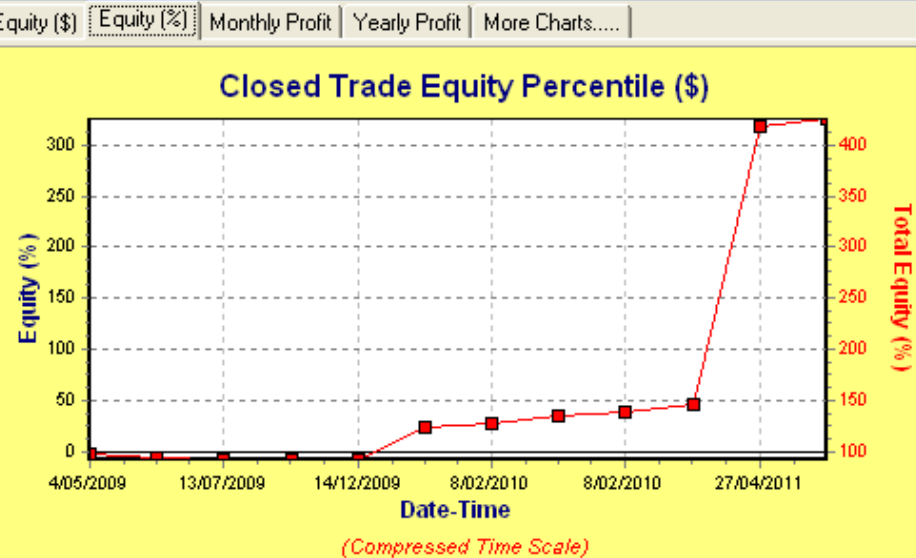
June 2018
Robert Brain



Trade	Sys ID	Pos	Symbol
1	0	Long	ADU
2	0	Long	ALD
3	0	Long	AMX

In...	Trade	Sys ID	Symbol
0	1	0	ADU
1	2	0	ALD
2	3	0	AMX
3	4	0	BOW
4	5	0	CCV
5	6	0	CHN
6	7	0	CUS

Charts (Closed Trade)



Trade Simulation Report

Trade Simulation Reports | Trade Statistics

Trade Parameters

Initial Capital:
Portfolio Limit:
Maximum number of open positions:
Maximum allowable daily orders:
Automatically Use Position Size Model from data
Default Position Size Model:
Capital per Trade (\$ value):

Disclaimer

Any information presented or discussed is only opinion, and is NOT ADVICE, and it should not be acted upon.

The particular financial needs of any individual have not been taken into consideration.

One should always seek professional advice before entering into financial or other arrangements.

AGENDA

- TradeSim — what is it?
- How does it work?
- Overview of the process
- TradeSim scan —
the special type of BullCharts scan
- How do we do it?
 - Create or modify a TradeSim scan
 - Set Trade Parameters
 - Run a Simulation
 - View the results

TradeSim – What is it?

- Software package
- A “plug-in” for BullCharts (& MetaStock)
- For back-testing,
to test **your own trading strategy**
on a **particular group of stocks**
within a **specific time period.**

How does it work?

- In BullCharts, create a special “TradeSim” scan.
Note the symbol in Scan Manager:



- Specify:
 - Your trading strategy criteria (entry, exit)
 - Testing time period (“from” and “to” dates)
 - A watchlist of stocks to scan through

How does it work?

- Run the BullCharts scan to identify the possible buy and sell transactions
- Check the results in TradeSim
- Specify “Trade Parameters” (eg. starting capital, position size, etc.)
- Run a TradeSim “Simulation”

Interactions

BullCharts

TradeSim



BullCharts

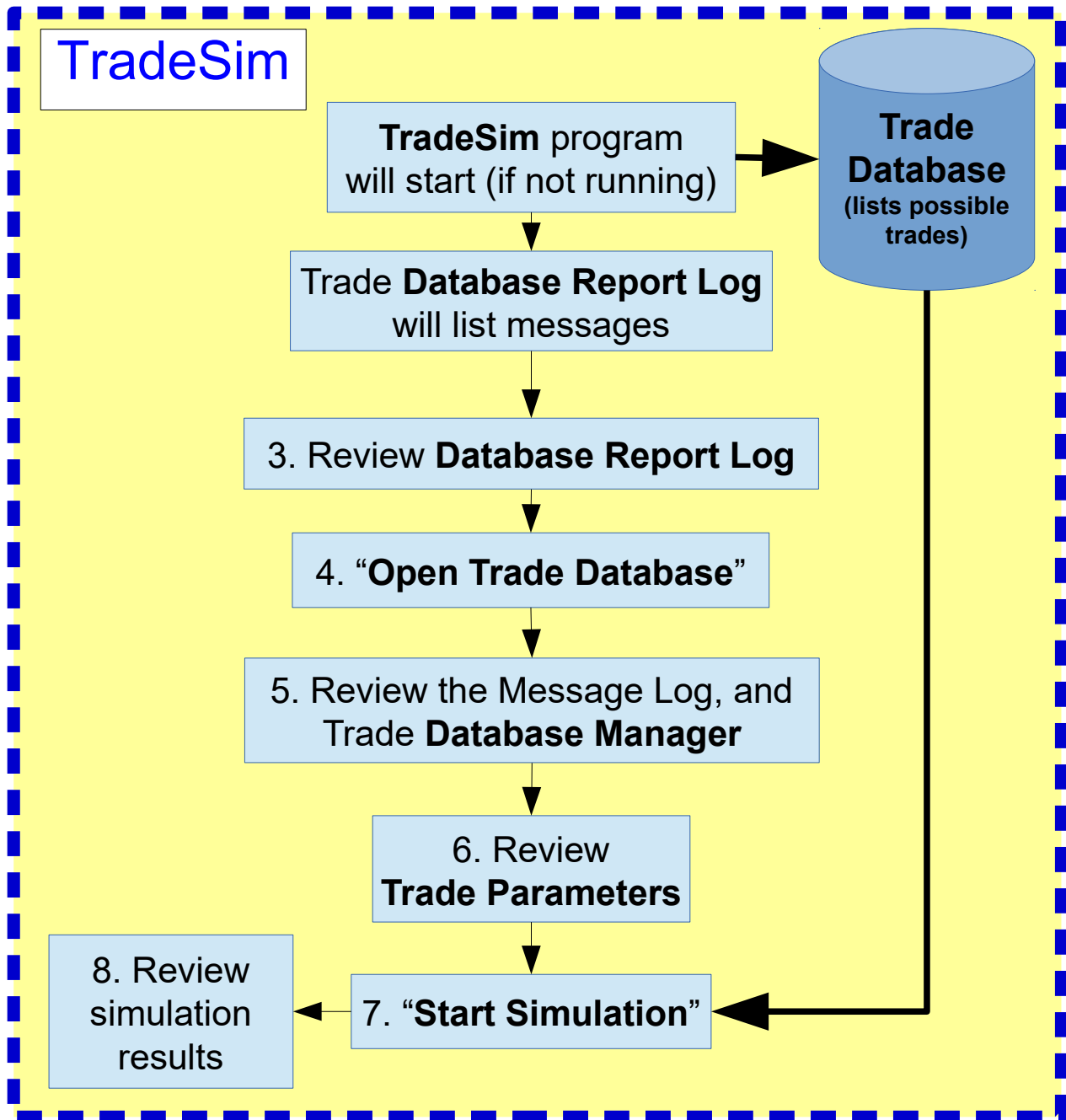
1. Create
"TradeSim scan"
in BullCharts

2. Run the
TradeSim scan

Watch BullCharts
and wait for scan
to complete

Process overview

Process overview



BullCharts

1. Create
"TradeSim scan"
in BullCharts

2. Run the
TradeSim scan

Watch BullCharts
and wait for scan
to complete

Process overview

TradeSim

TradeSim program
will start (if not running)

Trade
Database
(lists possible
trades)

Trade Database Report Log
will list messages

3. Review Database Report Log

4. "Open Trade Database"

5. Review the Message Log, and
Trade Database Manager

6. Review
Trade Parameters

8. Review
simulation
results

7. "Start Simulation"

Process overview

BullCharts

1. Create "TradeSim scan" in BullCharts

2. Run the TradeSim scan

Watch BullCharts and wait for scan to complete

9. Modify the scan

TradeSim

TradeSim program will start (if not running)

Trade Database Report Log will list messages

3. Review Database Report Log

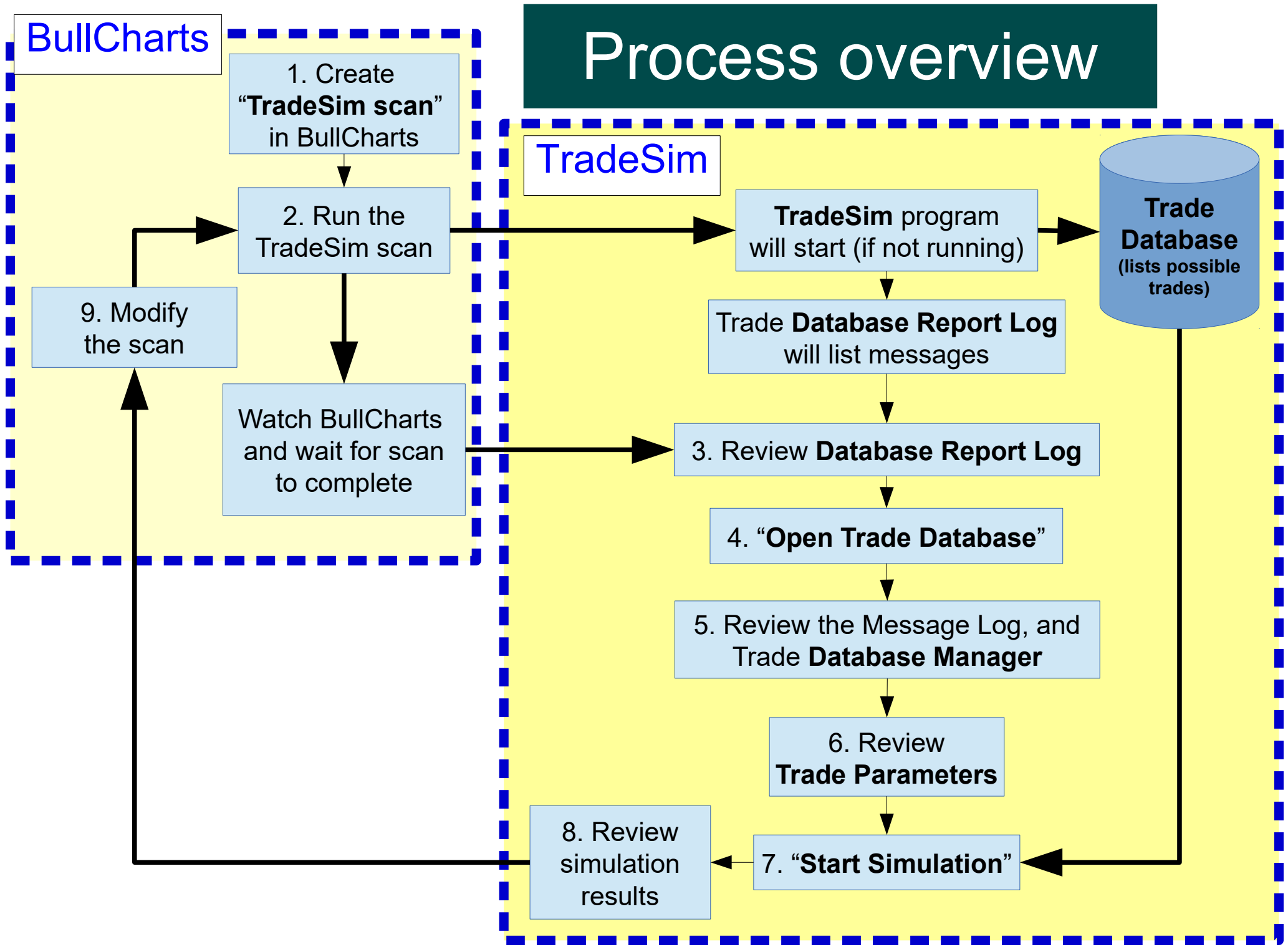
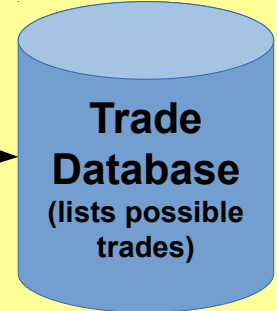
4. "Open Trade Database"

5. Review the Message Log, and Trade Database Manager

6. Review Trade Parameters

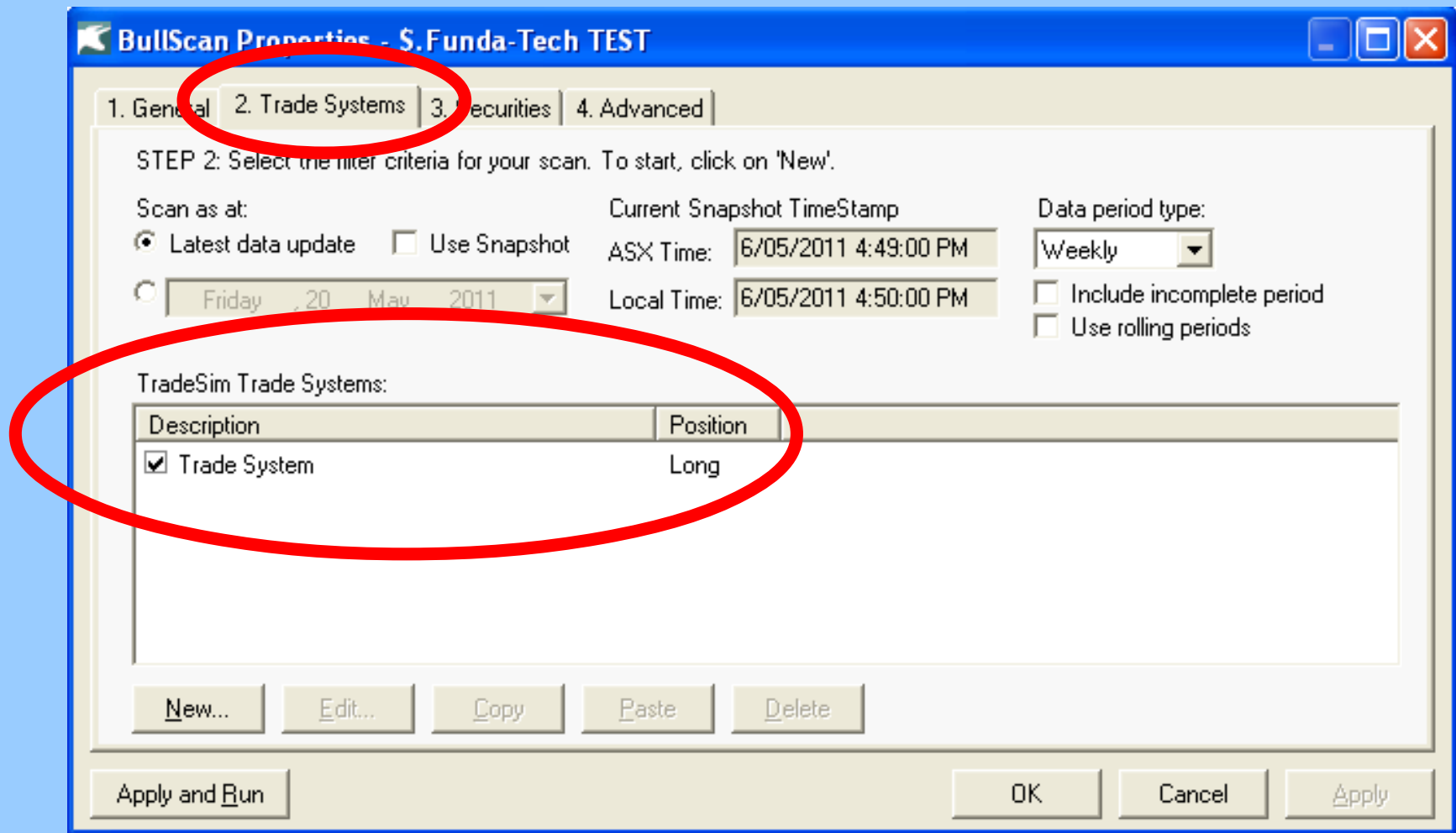
7. "Start Simulation"

8. Review simulation results



1. BullCharts TradeSim Scan

The familiar BullScan dialogue, except for:



2. Run the TradeSim scan

- In BullCharts run the “TradeSim” scan
- The scan output is a TradeSim “Trade Database” with a list of hypothetical trades.

CAUTION:

The scan will create a Trade Database file of the same name as the scan (.trb), and it will automatically over-write any existing Trade Database file.

3. Review Message Log

- Watch BullCharts and wait for the scan to complete (Status Bar at bottom of window)

3% Found 67 from 67.

(otherwise it might appear that nothing is happening)

- Watch TradeSim Status Bar

BUSY / [Total r

- Review the Message Log



3. Review Database Report Log

- Review the long list of log messages

TradeSim(DLL) Plugin - Trade Database Report Log for [C:\TradeSimData...]

File Help

Report Log

#	Symbol	Position	Description
			First date scanned from security data [27-Nov-2014] - Last date scanned from security data [27-Nov-2014] Available Records/Total Records: (477/499)
199	WSA	Long	Total Number of Long Trades written to the trade database Security Name: [WESTERN AREAS LIMITED] First date scanned from security data [27-Nov-2014] - Last date scanned from security data [27-Nov-2014] Available Records/Total Records: (477/499)

Jump to next error Help on selected item Open Trade Database Clear Log

READY [Total Number of Errors: 0] [Total Number of Warnings: 2] [Total Number of Queries: 200]

Review Report Log messages

Review any errors
and warnings

TradeSim(DLL) Plugin - Trade Database Report Log for [C:\Tra

File Help

Report Log

#	Symbol	Position	Description
Report Created on: Wednesday, May 25, 2011 14:16:06 TradeSim.DLL Version 8.4.2.239 - Copyright© 2000-2009 by Compuvision Australia Pty Ltd Trade Database File: [C:\TradeSimData\\$.Funda-Tech TEST.trb] DLL Path: [C:\Program Files\BullSystems\BullCharts\External Function DLLs\TradeSim.dll] Host Application Path: [C:\Program Files\BullSystems\BullCharts\BullCharts.exe]			
Opening trade database file and Writing Trade Database Header for [C:\TradeSimData\\$.Funda-Tech TEST.trb] Trade Database Version 11			
WARNING! - Price Filter Enabled WARNING! - Prices will automatically be modified if they fall outside the daily range			
1	AAC	Long	Total Number of Long Trades written to the trade database for [AAC] is 0, (which includes 0 open trades) (0 trades w Security Name: [AUSTRALIAN AGRICULTURAL COMPANY LIMITED.] First date scanned from security data [09-Feb-2009] - Last date scanned from security data [16-May-2011] Available Records/Total Records: (118/499)
1	AAC	Long	WARNING! - No trades written to the trade database for [AAC].
2	AAD	Long	Total Number of Long Trades written to the trade database for [AAD] is 1, (which includes 0 open trades) (0 trades w Security Name: [ARDENT LEISURE GROUP STAPLED SECURITIES] First date scanned from security data [09-Feb-2009] - Last date scanned from security data [16-May-2011] Available Records/Total Records: (118/412)
3	AAX	Long	Total Number of Long Trades written to the trade database for [AAX] is 1, (which includes 0 open trades) (0 trades w Security Name: [AUSENCO LIMITED] First date scanned from security data [09-Feb-2009] - Last date scanned from security data [16-May-2011]

Jump to next error Help on Selected Item Open Trade Database Clear Log Auto Scroll Window Contents Auto Popup Window

READY [Total Number of Errors: 20] [Total Number of Warnings: 59] [Total Number of Queries: 550] 569: Position [Long] Symbol [ZYL]

4. Open Trade Database

- Open Trade Database

TradeSim(DLL) Plugin - Trade Database Report Log for [C:\TradeSimData...]

File Help

Report Log

#	Symbol	Position	Description
			First date scanned from security data [27-Nov-2014] - Last date scanned: [27-Nov-2014] Available Records/Total Records: (477/499)
199	WSA	Long	Total Number of Long Trades written to the trade database Security Name: [WESTERN AREAS LIMITED] First date scanned from security data [27-Nov-2014] - Last date scanned: [27-Nov-2014] Available Records/Total Records: (477/499)

Jump to next error | Help on Selected Item | **Open Trade Database** | Clear Log

READY [Total Number of Errors: 0] [Total Number of Warnings: 2] [Total Number of Queries: 200]

5. Review Trade Parameters

Trade Parameters [Minimize] [Maximize] [Close]

Trade Parameters | **Preferences** | **More Features....**

Position Size Model

- Equal Dollar Units
- Equal Percent Dollar Units
- Fixed Dollar Risk
- Fixed Percent Risk
- Fixed Dollar Volatility
- Fixed Percent Volatility

Pyramid Profits

Pyramid Trades

Simulation Type

- Portfolio Simulation
- Portfolio Simulation (Ignore Dates)
- Basket test

Trade Parameters (Stocks)

Initial Trading Capital:

Portfolio Limit:

Total Maximum Open Positions:

Maximum allowable daily orders:

Transaction Cost (each way): Use Transaction Cost from Trade Database

Margin Requirement: Use Margin Req from Trade Database

Magnify Position Size(and Risk) according to Margin Requirement

Parameters - Equal Dollar Units

Capital per Trade:

Margin Requirement Interest Rate

Long Trades (Debit):

Short Trades (Credit):

Specify Daily Interest Rate

6. Start Simulation



- Now run a TradeSim “simulation”.
- The result is a number of screens:
 - Trade Database Manager view
 - Trade Simulation report
 - Trade Statistics Table and graphs
 - Various Equity Charts...

Trade Database

Trade	Sys ID	Pos	Symbol	Periodicity	CE	SBFTE	Entry Date-Time	Exit Date-Time
1	0	Long	ADU	Weekly	Yes	Yes	2/03/2009	2/05/2011
2	0	Long	ALD	Weekly	Yes	Yes	2/03/2009	4/05/2009
3	0	Long	AMX	Weekly	Yes	Yes	2/03/2009	27/04/2011
4	0	Long	BOW	Weekly	Yes	Yes	2/03/2009	8/02/2010
5	0	Long	CCV	Weekly	Yes	Yes	2/03/2009	6/04/2010
6	0	Long	CHN	Weekly	Yes	Yes	2/03/2009	18/01/2010
7	0	Long	CUS	Weekly	Yes	Yes	2/03/2009	8/02/2010
8	0	Long	DMG	Weekly	Yes	Yes	2/03/2009	13/07/2009
9	0	Long	DOM	Weekly	Yes	Yes	2/03/2009	13/07/2009
10	0	Long	DRA	Weekly	Yes	Yes	2/03/2009	8/02/2010
11	0	Long	ERA	Weekly	Yes	Yes	2/03/2009	1/02/2010
12	0	Long	ESG	Weekly	Yes	Yes	2/03/2009	30/11/2009
13	0	Long	EXT	Weekly	Yes	Yes	2/03/2009	23/11/2009
14	0	Long	FXL	Weekly	Yes	Yes	2/03/2009	10/05/2010
15	0	Long	IAU	Weekly	Yes	Yes	2/03/2009	23/11/2009
16	0	Long	ICN	Weekly	Yes	Yes	2/03/2009	2/11/2009
17	0	Long	KCN	Weekly	Yes	Yes	2/03/2009	1/11/2010
18	0	Long	MML	Weekly	Yes	Yes	2/03/2009	1/02/2010
19	0	Long	MMS	Weekly	Yes	Yes	2/03/2009	1/02/2010
20	0	Long	MPD	Weekly	Yes	Yes	2/03/2009	8/02/2010

Start Entry Date: 2/03/2009 Stop Entry Date: 26/10/2009 581 trades selected from a total of 581

Trade Simulation Report

Trade Parameters and Preferences

Trade Database Filename

C:\TradeSimData\\$.Funda-Tech TEST.trb

Trade Parameters

Initial Capital:	\$50,000.00
Portfolio Limit:	100.00%
Maximum number of open positions:	100
Maximum allowable daily orders:	20
Automatically Use Position Size Model from database:	No
Default Position Size Model:	Equal Dollar Units
Capital per Trade (\$ value):	\$5,000.00
Pyramid profits:	No
Transaction cost (Trade Entry):	\$0.00
Transaction cost (Trade Exit):	\$0.00
Automatically use Margin Requirement from database:	No
Margin Requirement:	100.00%
Magnify Position Size (& Risk) according to Margin Req:	No
Automatically select Position Size Model from database:	No
Enable Provisional Trades:	No
Survivorship Bias Filer:	No
Margin Requirement Daily Interest Rate (Long Trades):	0.0000%
Margin Requirement Yearly Interest Rate (Long Trades):	0.0000%
Margin Requirement Daily Interest Rate (Short Trades):	0.0000%
Margin Requirement Yearly Interest Rate (Short Trades):	0.0000%

Trade Preferences

Trading Instrument:	Stocks
Break Even Trades:	Process separately
Trade Position Type:	Process all trades
Entry Order Type:	Default Order
Exit Order Type:	Default Order
Minimum Trade Size:	\$0.00
Accept Partial Trades:	No
Volume Filter:	Ignore Volume Information
Pyramid Trades:	No

Trade Statistics Table

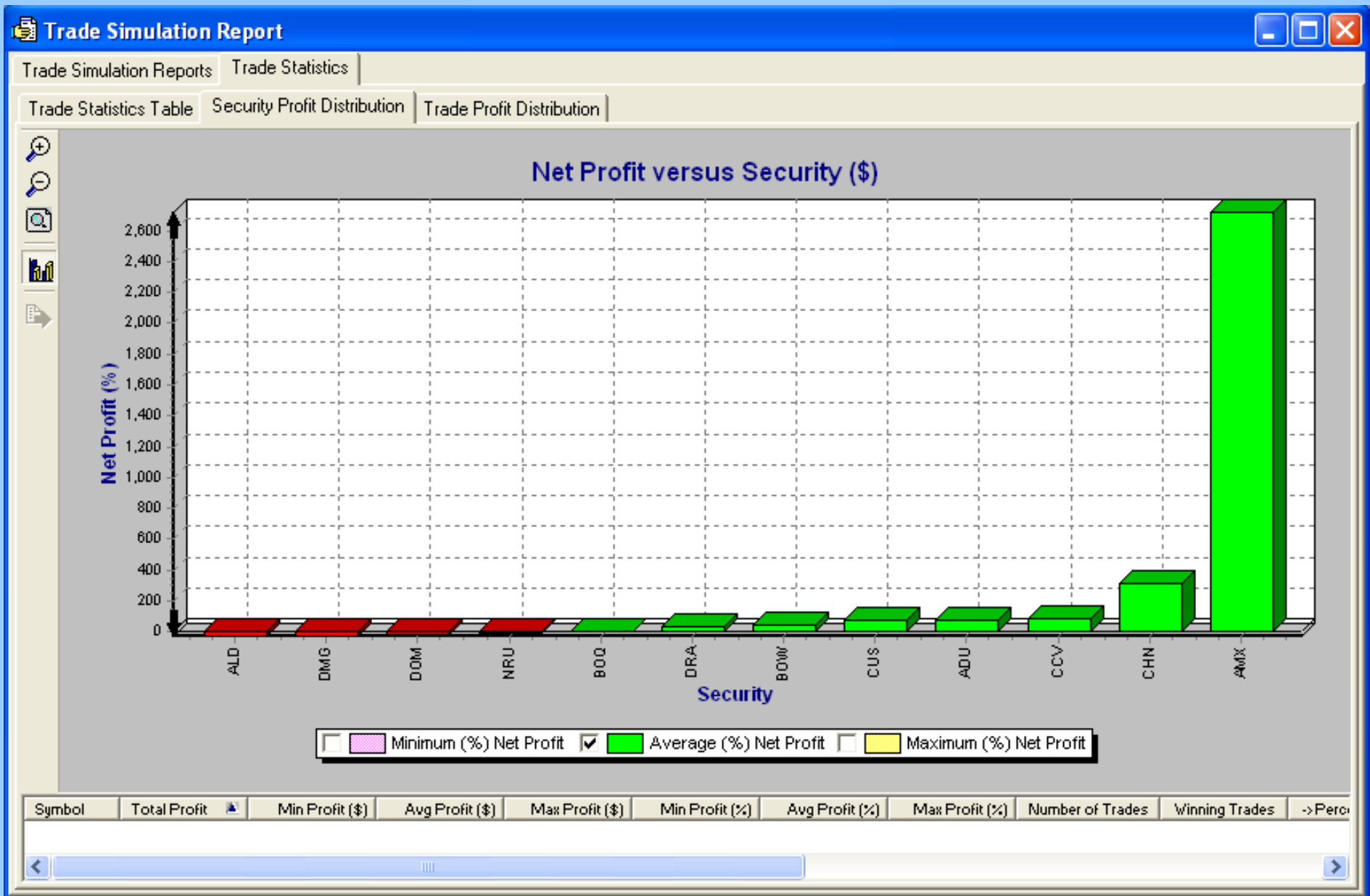
Trade Simulation Report

Trade Simulation Reports | Trade Statistics

Trade Statistics Table | Security Profit Distribution | Trade Profit Distribution

Sym...	Total Profit	Min Profit (\$)	Avg Profit (\$)	Max Profit (\$)	Min Profit (%)	Avg Profit (%)	Max Profit (%)	Number of Trades	Winning Trades	->Pe
ADU	\$3,507.42	\$3,507.42	\$3,507.42	\$3,507.42	70.15%	70.15%	70.15%	1	1	100
ALD	-\$1,470.50	-\$1,470.50	-\$1,470.50	-\$1,470.50	-29.41%	-29.41%	-29.41%	1	0	0
AMX	\$136,009.36	\$136,009.36	\$136,009.36	\$136,009.36	2720.00%	2720.00%	2720.00%	1	1	100
BOQ	\$245.06	\$245.06	\$245.06	\$245.06	4.91%	4.91%	4.91%	1	1	100
BOW	\$2,080.41	\$2,080.41	\$2,080.41	\$2,080.41	41.61%	41.61%	41.61%	1	1	100
CCV	\$3,984.37	\$3,984.37	\$3,984.37	\$3,984.37	79.69%	79.69%	79.69%	1	1	100
CHN	\$15,715.38	\$15,715.38	\$15,715.38	\$15,715.38	314.30%	314.30%	314.30%	1	1	100
CUS	\$3,482.79	\$3,482.79	\$3,482.79	\$3,482.79	69.68%	69.68%	69.68%	1	1	100
DMG	-\$1,249.98	-\$1,249.98	-\$1,249.98	-\$1,249.98	-25.00%	-25.00%	-25.00%	1	0	0
DOM	-\$980.00	-\$980.00	-\$980.00	-\$980.00	-19.60%	-19.60%	-19.60%	1	0	0
DRA	\$1,833.26	\$1,833.26	\$1,833.26	\$1,833.26	36.67%	36.67%	36.67%	1	1	100
NRU	-\$375.00	-\$375.00	-\$375.00	-\$375.00	-7.50%	-7.50%	-7.50%	1	0	0

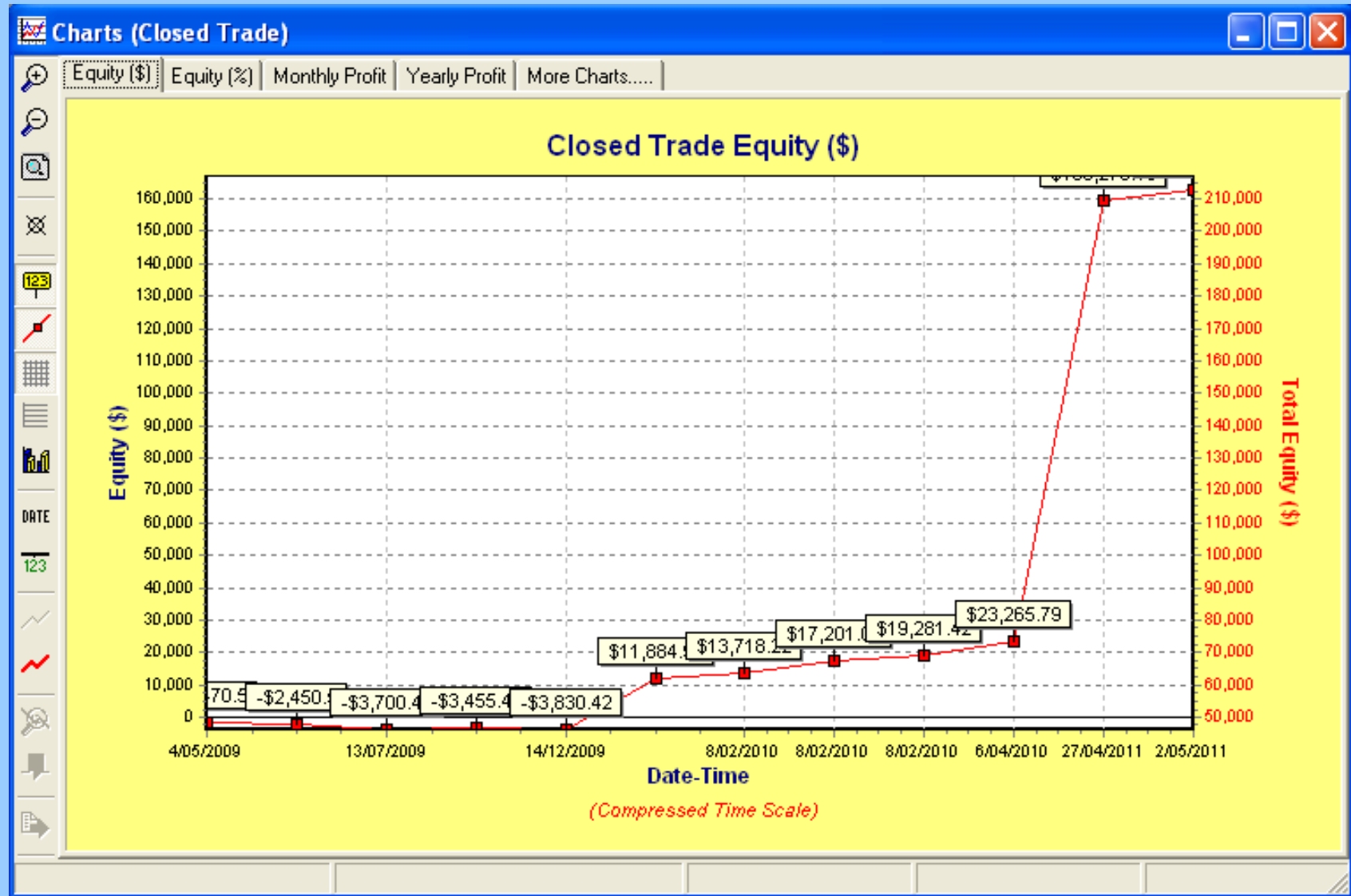
Trade Statistics — Security...



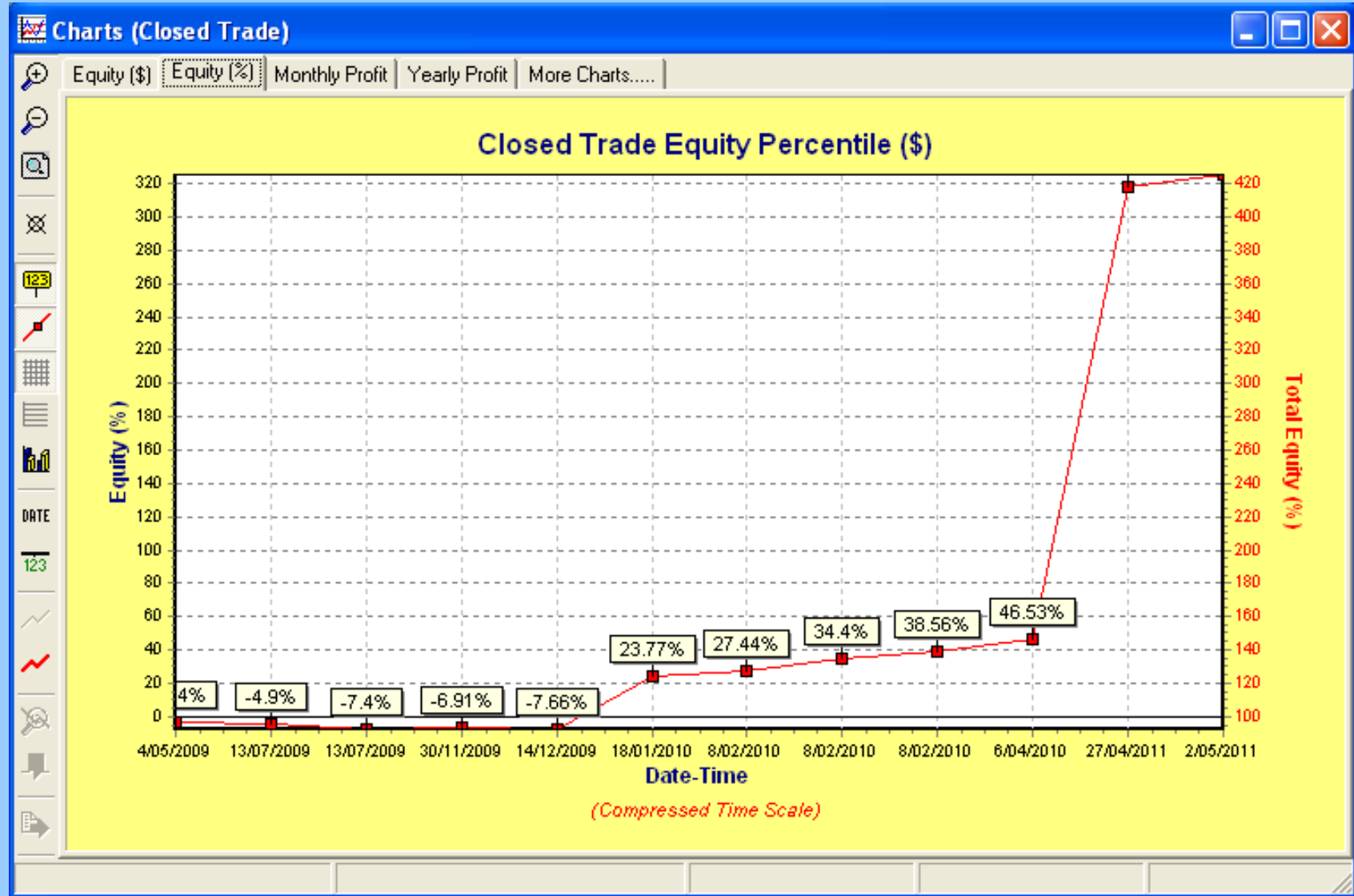
Trade Log

In...	Trade	Sys ID	Symbol	Status	Pos	Period...	Trans Date-Time	P Level	P Cou...	Re-entry Type	Days	Volatility	Initial Str	Profit (%)	Total Capital
0	1	0	ADU	Enter	Long	Weekly	2/03/2009	0	0	Base	-	-	\$0.18!	-	\$50,000.00
1	2	0	ALD	Enter	Long	Weekly	2/03/2009	0	0	Base	-	-	\$0.25!	-	\$50,000.00
2	3	0	AMX	Enter	Long	Weekly	2/03/2009	0	0	Base	-	-	\$0.05	-	\$50,000.00
3	4	0	BOW	Enter	Long	Weekly	2/03/2009	0	0	Base	-	-	\$0.23	-	\$50,000.00
4	5	0	CCV	Enter	Long	Weekly	2/03/2009	0	0	Base	-	-	\$0.24!	-	\$50,000.00
5	6	0	CHN	Enter	Long	Weekly	2/03/2009	0	0	Base	-	-	\$0.08	-	\$50,000.00
6	7	0	CUS	Enter	Long	Weekly	2/03/2009	0	0	Base	-	-	\$1.10	-	\$50,000.00
7	8	0	DMG	Enter	Long	Weekly	2/03/2009	0	0	Base	-	-	\$0.1!	-	\$50,000.00
8	9	0	DOM	Enter	Long	Weekly	2/03/2009	0	0	Base	-	-	\$3.92!	-	\$50,000.00
9	10	0	DRA	Enter	Long	Weekly	2/03/2009	0	0	Base	-	-	\$0.33!	-	\$50,000.00
10	2	0	ALD	Exit	Long	Weekly	4/05/2009	0	0	-	63	-	\$0.25!	-	\$50,000.00
11	9	0	DOM	Exit	Long	Weekly	13/07/2009	0	0	-	133	-	\$3.92!	-	\$50,000.00
12	8	0	DMG	Exit	Long	Weekly	13/07/2009	0	0	-	133	-	\$0.1!	-	\$50,000.00
13	392	0	BOQ	Enter	Long	Weekly	20/07/2009	0	0	Base	-	-	\$7.89!	-	\$50,000.00
14	393	0	NRU	Enter	Long	Weekly	20/07/2009	0	0	Base	-	-	\$0.02	-	\$50,000.00
15	392	0	BOQ	Exit	Long	Weekly	30/11/2009	0	0	-	133	-	\$7.89!	-	\$50,000.00
16	393	0	NRU	Exit	Long	Weekly	14/12/2009	0	0	-	147	-	\$0.02	-	\$50,000.00
17	6	0	CHN	Exit	Long	Weekly	18/01/2010	0	0	-	322	-	\$0.08	-	\$50,000.00
18	10	0	DRA	Exit	Long	Weekly	8/02/2010	0	0	-	343	-	\$0.33!	-	\$50,000.00
19	7	0	CUS	Exit	Long	Weekly	8/02/2010	0	0	-	343	-	\$1.10	-	\$50,000.00
20	4	0	BOW	Exit	Long	Weekly	8/02/2010	0	0	-	343	-	\$0.23	-	\$50,000.00
21	5	0	CCV	Exit	Long	Weekly	6/04/2010	0	0	-	400	-	\$0.24!	-	\$50,000.00
22	3	0	AMX	Exit	Long	Weekly	27/04/2011	0	0	-	786	-	\$0.05	-	\$50,000.00
23	1	0	ADU	Exit	Long	Weekly	2/05/2011	0	0	-	791	-	\$0.18!	-	\$50,000.00
														-2.94 %	\$48,529.50
														-4.90 %	\$47,549.50
														-7.40 %	\$46,299.52
														-	\$46,299.52
														-	\$46,299.52
														-	\$46,544.58
														-	\$46,169.58
														-	\$61,884.96
														-	\$63,718.22
														-	\$67,201.01
														-	\$69,281.42
														-	\$73,265.79
														-	\$209,275.15
														-	\$212,782.57
														-	\$212,782.57

Equity Chart — Dollars \$



Equity — %



Warnings

- Your *stock universe* can make a big difference to the results
- The *exit strategy* can make a big difference
- Survivorship bias is not addressed

More information?

- Tutorial guides (pdf), videos, etc.
- Robert's web site:
www.robertbrain.com/bullcharts/
- The official web site:
www.compuvision.com.au
- Pricing* (time unlimited versions):
Standard edition — \$198
Professional edition — \$484
Enterprise edition — \$1,520

* pricing as at 2016

Questions / Discussions?

The End